

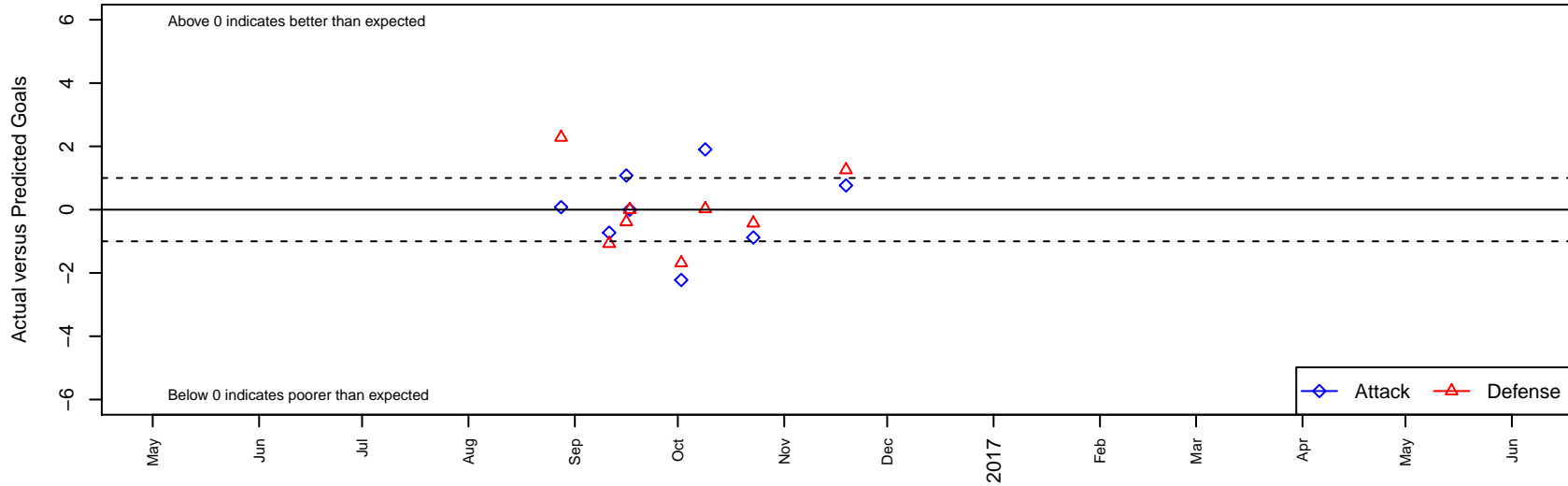
Santa Clara Sporting Green B03

Santa Clara, CAN
 B03 total strength=1172
 attack=5.31 defense=2.47
 fall league = NorCal NPL 03 NPL 1 West

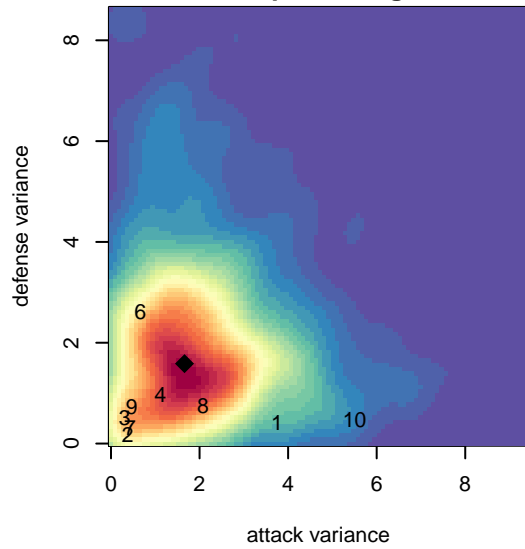
alt names used:
 SANTA CLARA SPORTING 03B GREEN
 SANTA CLARA SPORTING 03B GREEN

Venues played:
 2016 FWRL CAN CRL U14
 2016 NorCal NPL 03 NPL 1 West

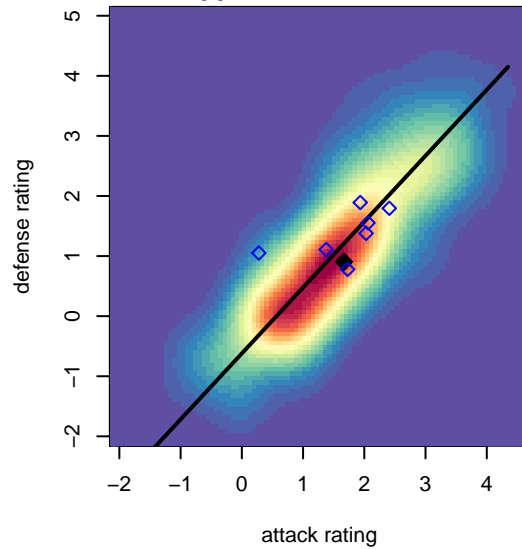
Santa Clara Sporting Green B03
 Dots are actual minus expected GF (blue circles) and GA (red triangles).
 Blue line is smoothed change in attack strength. Red is smoothed change in defense strength.



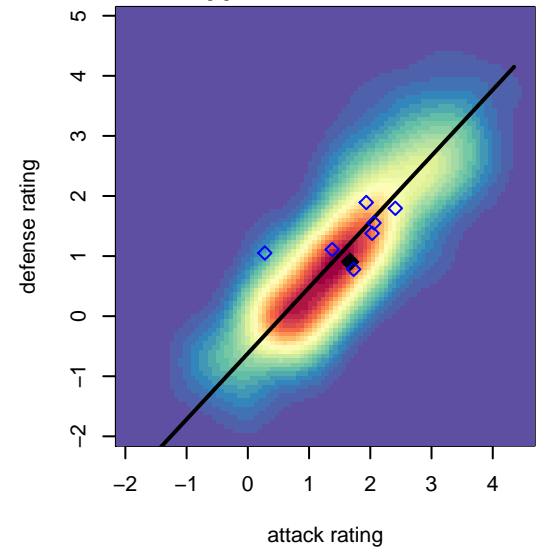
**attack and defense variance (black dot)
relative to other teams
and top 10 in region**



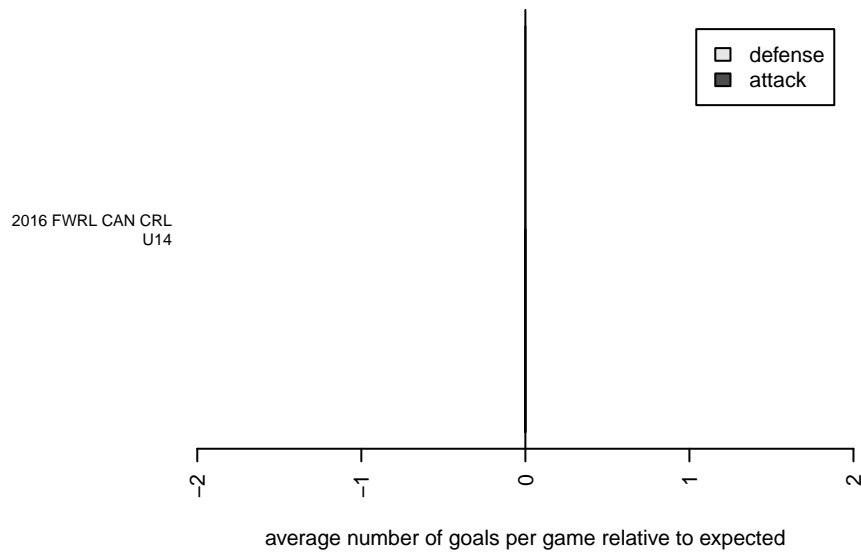
**attack and defense rating
relative to others at age
and all opponents in last 13 months**



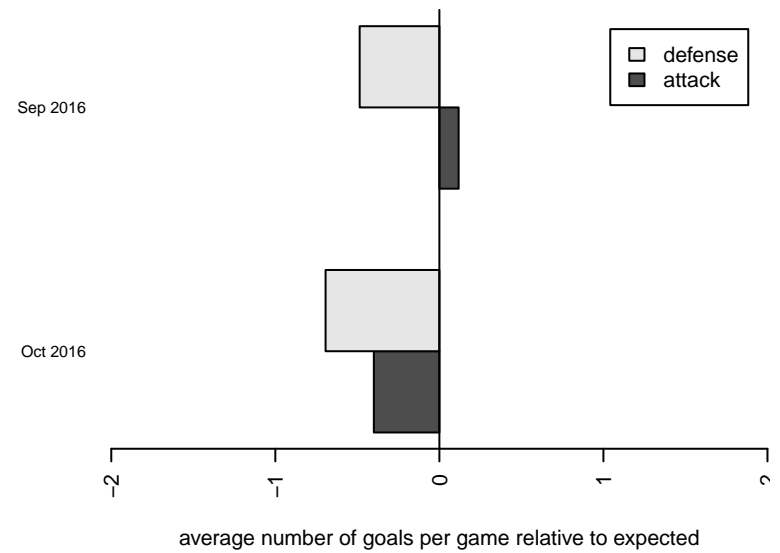
**attack and defense rating
relative to others at age
and all opponents in last 13 months**



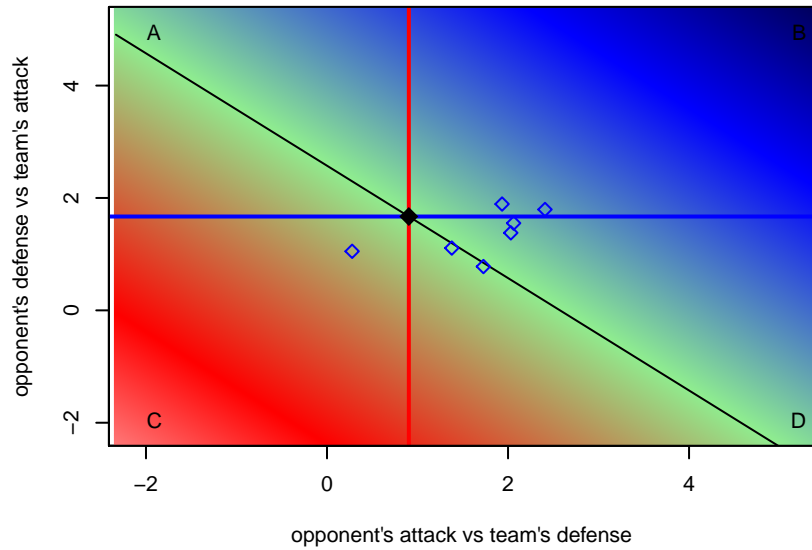
Performance relative to 13 month average



Performance relative to 13 month average



Distribution of opponents
 Red = Lose zone, Blue = Win zone, Green = Even
 Black line separates win/lose zones



lot. A=Neither has attack advantage, B=Opponent has both attack and defense advantage, C=Opponent has both attack and defense disadvantage, D=Both have

date	home		away		venue	pred.home	pred.away
16-11-19	Santa Clara Sporting Green B03	2	Alum Rock PAC Inter Milan B03	2	2016 FWRL CAN CRL U14	1.23	3.26
16-10-23	Sunnyvale Alliance SC Elite Red B03	2	Santa Clara Sporting Green B03	1	2016 FWRL CAN CRL U14	1.57	1.88
16-10-09	San Francisco Mission Green B03	3	Santa Clara Sporting Green B03	3	2016 FWRL CAN CRL U14	3.03	1.10
16-10-02	Stanford SC United Black B03	4	Santa Clara Sporting Green B03	0	2016 FWRL CAN CRL U14	2.32	2.22
16-09-17	Santa Clara Sporting Green B03	0	San Jose Earthquakes CV Pre-Academy B03	1	2016 NorCal NPL 03 NPL 1 West	0.00	1.00
16-09-16	Santa Clara Sporting Green B03	3	Fremont Colts Green B03	1	2016 FWRL CAN CRL U14	1.92	0.61
16-09-11	El Camino Real United B03	4	Santa Clara Sporting Green B03	0	2016 FWRL CAN CRL U14	2.93	0.73
16-08-28	Santa Clara Sporting Green B03	1	Red Star SA Central Valley Liberty B03	2	2016 FWRL CAN CRL U14	0.92	4.28